

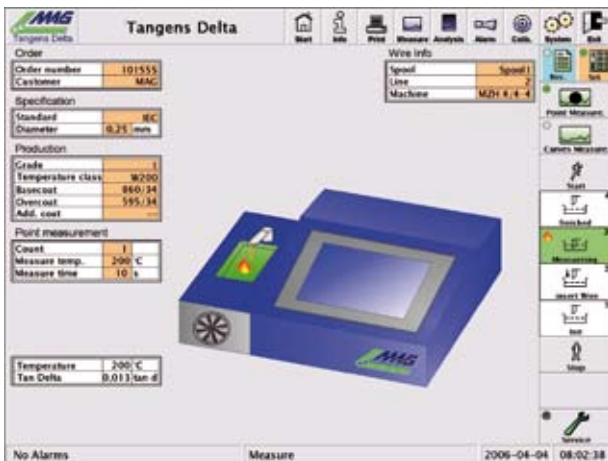


δ TANGENS DELTA

Measurement system for determining the dielectric dissipation factor

Description

- The DFMS 100 test equipment is a measurement system that allows fast and simple determination of the Dielectric Dissipation Factor ($\tan \delta$) of magnet wire samples.
- The user-friendly and sophisticated operating software, the perfectly designed hardware as well as the possibility of carrying out curve measurement and point measurement in the shortest possible time, will make the DFMS 100 a reliable partner for quality engineers and anyone working in this area.
- Precise measurement of the "Degree of Cure" is a basic requirement for the determination of optimum processing parameters. Once the optimum processing parameters has been determined by investigating dissipation factor curves, the point measurement method of the DFMS 100 can be used for controlling wire-quality during production.
- The external conductor is made of a metal alloy, which takes on a liquid consistence during operation. The advantage of this method of conduction is that no pre-preparation of the wire sample is required.
- Thanks to the integrated 12,1" touch panel, the DFMS 100 is easy and comfortable to operate.
- The operating software is based on Cimplicity-HMI, one of the most popular visualization products world wide. The powerful Cimplicity-SQL-Server database is used for data storage.
- Trending, order management, alarm management, optional web browser capability and the multilingual support are further highlights of the DFMS 100.
- The DFMS 100 is designed for stand-alone operation, but with the integrated Ethernet interface (RJ45), the DFMS 100 can be connected to higher control systems i.e. SCADA systems (Supervisory Control And Data Acquisition).Using the supported "DDE client communication" feature of the operating software, all data of interest can be collected at any place in your network (i.e. data collection with Microsoft Excel).



The operating software is based on Cimplicity-HMI, one of the most popular visualization products worldwide.



A well designed sample holder for highest operating comfort.

TECHNICAL DATA

Dimensions

Dimensions (WxHxD) 570 x 235 x 400mm

Weight 31kg

Colour display

Size 12.1" TFT Active Matrix Panel

Resolution SVGA 800x600

Touch panel Intelli Touch

Power supply

Power supply Input AC 230V 50/60Hz (110V on inquiry)

Max. power consumption 550VA

Bath unit

Measurement range 60 - 300°C (other ranges on inquiry)

Resolution 0.1°C

Accuracy $\pm 1^\circ\text{C}$

Sample holder

Wire range: 0.05 - 1.6mm (other ranges on inquiry)

Measurement unit

Measurement range (DF) 0.002 - 0.99

Resolution 0.0002 (C>40pF)

Test voltage 1V

Test frequency 1KHz

Interfaces

Ethernet TCP/IP 1x

USB 2x

Environment

Operating temperature 10 - 45 °C

Air humidity max 70% , not condensing